

NEW PRODUCT



NEW GENERATION
SIDING

**STONE
HOUSE**

SCHIST collection

SCHIST collection



Stone-House Schist siding is a new product of the year 2019. The facade panel imitates rubble masonry. Stone-House Schist siding is heterogeneous in its texture, each tile has its unique structure and diversity of colors highlighting its naturalness. A double lock system allows installation of panels without junction plates forming a monolithic wall. Stone-House Schist siding creates an inimitable appearance of the facade that will please the eye for many years.



CHARACTERISTICS



		Length	2000 mm		Gross weight	17 kg
		Effective width	225 mm		Amount in package	15 pcs
		Thickness	1,2±0,05 mm		Quadrature in one package	6,75 m ²
		Package size	2130x280x120 mm		Quadrature of one plate	0,45 m ²



light-grey



burgundy

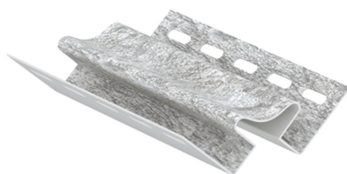


beige

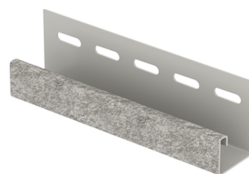
ACCESSORIES

* Profiles are produced in the same colors as the siding

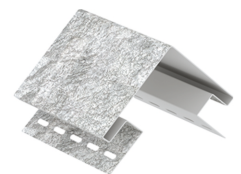
inside corner



J-trim



outside corner



www.instagram.com/uplast_bel



[youtube.com/Ю-Пласт Завод](https://www.youtube.com/Ю-Пласт Завод)

LLC «U-Plast Bel»
Republic of Belarus, 220030
Minsk, Kazarmenny lane, house 4
u-plast.net

Tel. / fax: +375 17 / 242-92-20
+375 17 / 242-92-21