



NEW GENERATION
SIDING

 **STONE
HOUSE**

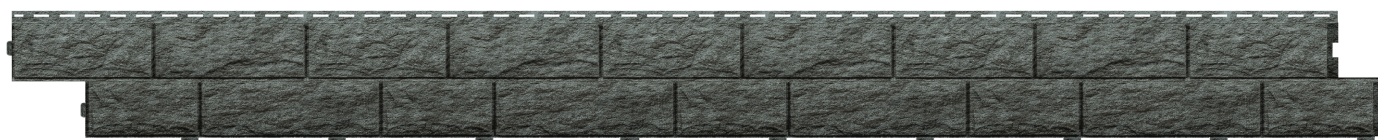
STONE collection

Stone-House Stone siding, its facade panel imitates a real stone texture. Material with impeccable technical specifications. It is reliable, durable and resistant to environmental effects. Stone-House Stone siding will become a synonym of originality, beauty and high quality of construction and finishing materials. A unique system of double lock allows installation of siding without junction plates forming a monolithic wall. Stone-House Stone siding allows to take a fresh look at the habitual dwelling, it adds some special charm and color.



CHARACTERISTICS

mortise and tenon joint



Length	3025 mm	Gross weight	22,88 kg
Effective width	225 mm	Amount in package	15 pcs
Thickness	1,2±0,05 mm	Quadrature in one package	10,2 m ²
Package size	3190x280x80 mm	Quadrature of one plate	0,68 m ²



golden



emerald

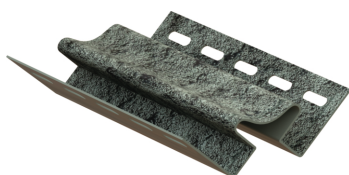


burnt

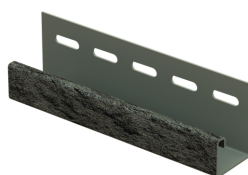
ACCESSORIES

* Profiles are produced in the same colors as the siding

inside corner



J-trim



outside corner

